

CTH4 315 T4 0,25kW (278310106)

GENERAL DATA



ROOF FAN, VERTICAL DISCHARGE

MANUFACTURING FEATURES

- Fan made of steel with polyester powder finishing coat.
 - High efficiency backward impeller with self-cleaning system of steel.
 - Standard asynchronous motor with IP-55 protection and Class F insulation.
- Manufactured with standard voltages: 400V 50Hz three phase motors

APPLICATIONS

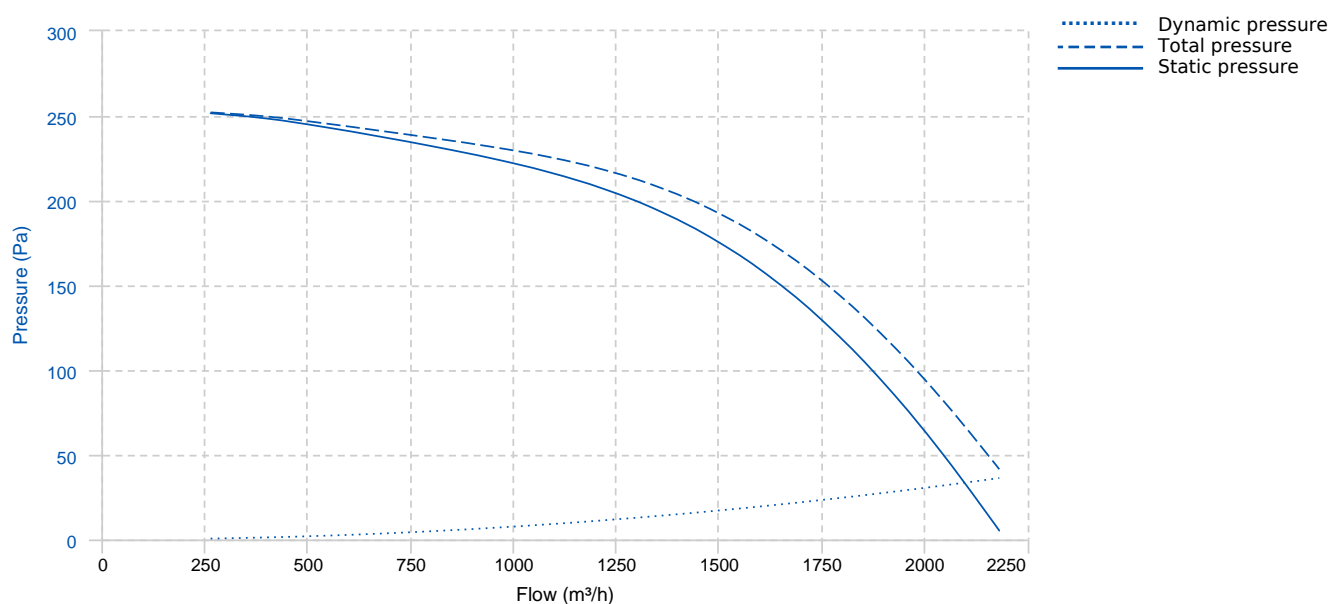
Specially designed for roof installation, with vertical discharge without any additional kit, they are suitable for:

- Smoke extraction
- Air renewal in buildings and industries.
- Industrial and professional kitchen hoods.
- Maximum continuous operation temperature: 80°C (fluide).
- Maximum ambient temperature: 50°C.
- Cinemas.

UNDER REQUEST

- Version made of inox 304/316.
- Finishing C4-C5.
- Special voltages.

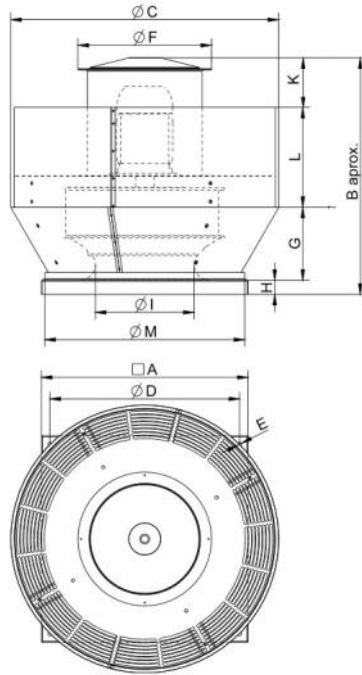
PERFORMANCE CURVE



TECHNICAL DATA

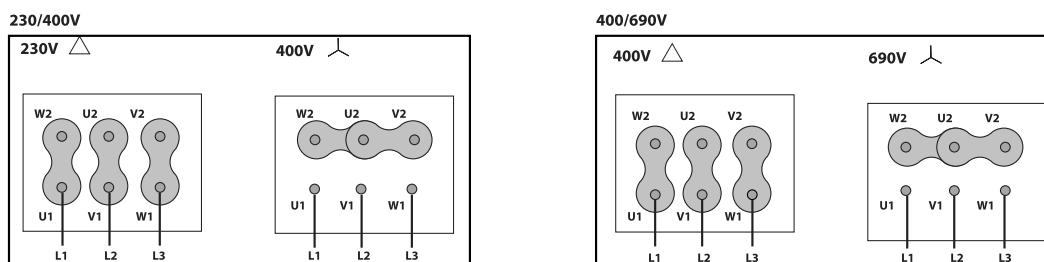
Fan							
RPM	1400	Approx. weight	16 kg	Max. Flow	2190 m ³ /h		
Motor							
Power	0,25 kW	RPM	1400	I max. (230V)	1,38 A	I max. (400V)	0,79 A
Size	71	Approx. weight	5.4 kg				

DIMENSIONS



Dimensions (mm)									
A	450	B	547.5	D	390	G	153	H	40
K	140	L	215	ØC	554.5	ØE	12	ØF	374
ØI	210	ØM	428						

WIRING DIAGRAM



ACCESSORIES



SAFETY SWITCH
INT 25 3P A
REF: INT253PA

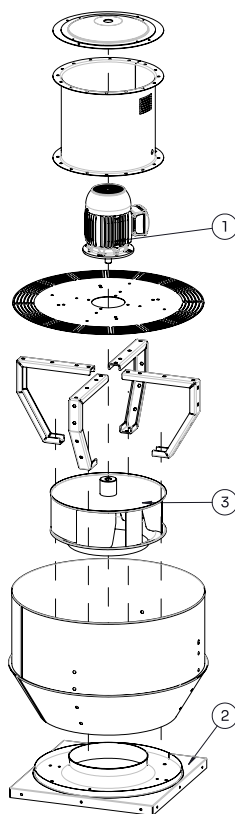


FREQUENCY SPEED CONTROLLER
SFC 230 I 2,5A *
REF: SFC230I003



FREQUENCY SPEED CONTROLLER
SFC 400 III 1,2A *
REF: SFC400III1

SPARE PARTS





	Code	Model	Qty
1	721001126	MOTOR 0,25kW T4 B5 230/400V	x1
3	R-279319381	IMPELLER THRE R63B1 315X90x14 RD	x1